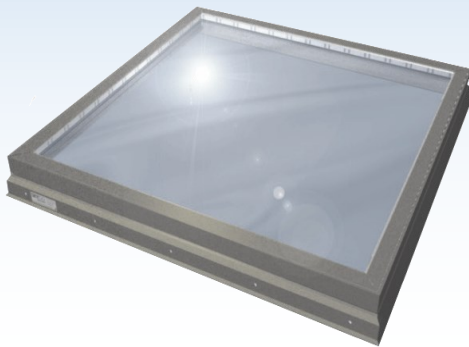




# SKYPRO "Thermic Barrier" SKYLIGHT

## Energy Efficient Frame System



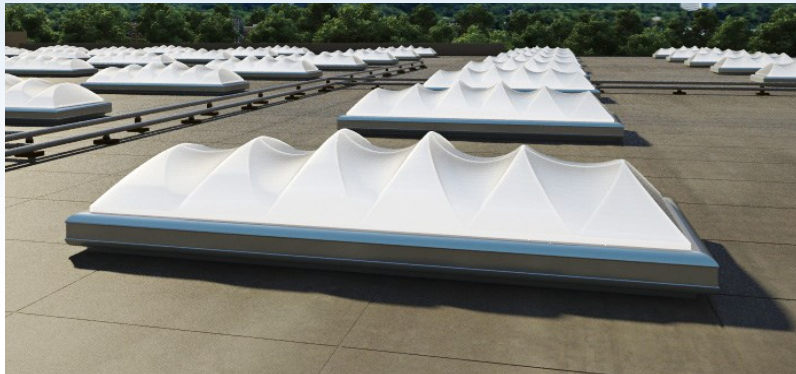
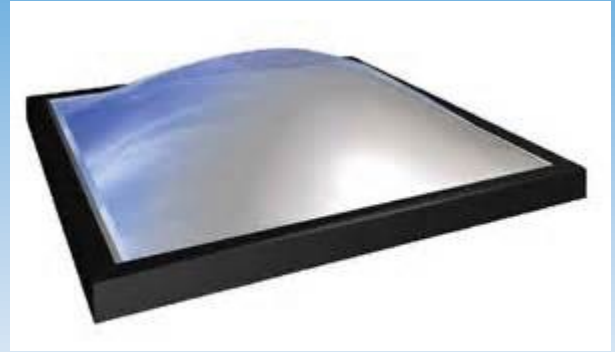
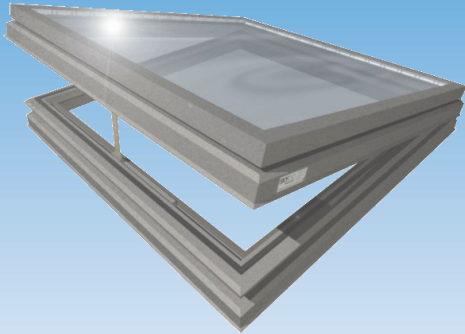
- 4' x 8' size features our innovative **SKYWAVE** Arc Dome with 30% more light-collecting surface area
- Standard domed units with high-impact resistant Polycarbonate or Acrylic glazing
- Tested to 10 times lower air infiltration allowed by AAMA/WDMA/CSA 101/I.S./A440
- Tested to 4 times lower water penetration allowed by AAMA/WDMA/CSA 101/I.S./A440
- Poured and Debrided thermally-broken aluminum framing system
- Meets the current International Energy Code Requirements for SHGC and VLT
- U Factor (Insulating Value) variations depending on glazing materials
- Compliant with AAMA/WDMA/CSA 101/I.S./A440 for Code Compliance
- 4' x 8' Skywave arc units tested to meet an 800 lb Impact Load

**Superior energy performance at an economical price**

**SKYCO Skylights**  
**2995 Airway Ave, Suite B**  
**Costa Mesa, CA 92626**  
**Phone: 949 629-4090**

[www.skycoskylights.com](http://www.skycoskylights.com)

The Skyco “*Thermic Barrier*” skylight provides the benefit of free natural daylight and reduces interior condensation



Skyco Skylights [www.skycoskylights.com](http://www.skycoskylights.com)  
949 629-4090