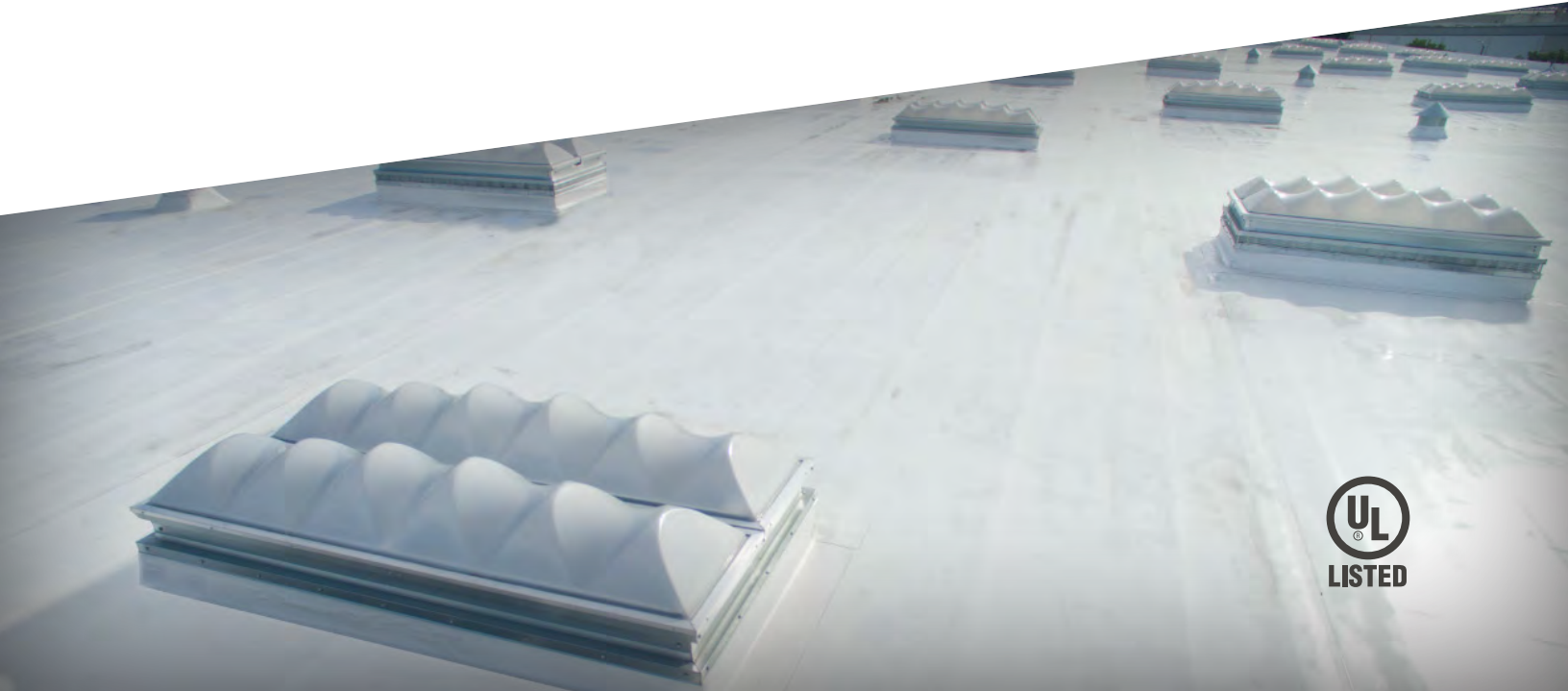
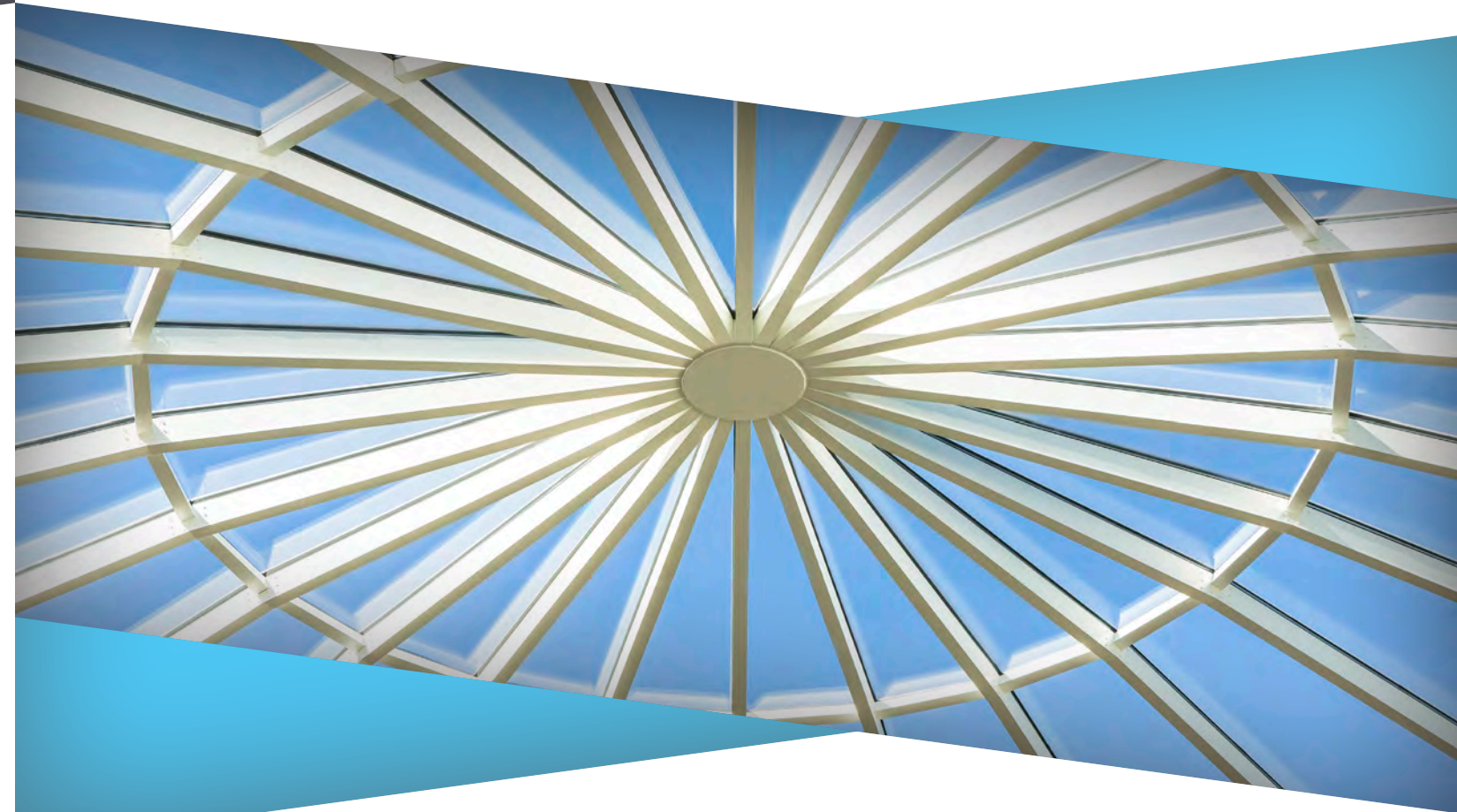




Skycos
SKYLIGHTS

Skycos
SKYLIGHTS

www.SKYCOSKYLIGHTS.com | 855.99.SKYCO
2995 Airway Ave, Suite B, Costa Mesa, CA 92626



INTEGRITY
QUALITY
INNOVATION

Commercial/Industrial Skylights | Custom Structural Skylights | UL Listed Smoke Vents
Roof Access Hatches | Rooftop Safety & Security | Photovoltaic Skylights & Canopies

ABOUT SKYCO SKYLIGHTS

Over 150 years of combined experience. SKYCO Skylights started out from day one with an innovative approach to product development, based on a customer-centric business model. Each and every skylight product is designed to perform under the harshest of environments. An industry leader in manufacturing and design, SKYCO Skylights's products are built with the highest of quality materials by the most experienced and skilled team.

SKYCO Skylights's team works alongside the industry's largest roofers, contractors and architects providing the highest standards of quality and customer service. Come take a tour of the state-of-the-art facility and you will see a high level of dedication towards manufacturing of the finest skylights. More than just a manufacturer, SKYCO Skylights is available to help you through the entire process, from consultation and engineering/design to manufacturing. The ability to control the entire manufacturing process from concept to delivery allows quality control and timely service.



INDUSTRIAL SKYLIGHTS



SKYCO Skylights's UL Listed Smoke Vents and Unit Skylights are the perfect daylighting solution for your industrial building needs.

SKYCO Skylights's industrial and commercial skylight line provides 30% more lighting and significantly more lifespan for the roofer, contractor or architect that insists on providing their customers with the best and most cost-effective building materials.



Industrial Line includes UL Listed, ICC Listed and FM Global Approved Skylights.

Leave all your custom skylight building needs to the pros. SKYCO Skylights's team of engineers and project managers have successfully completed thousands of custom skylight builds over the span of several decades.



SKYCO Skylights custom skylights not only look stunning and compliment any building but they perform under the most rigorous conditions. From glazing to thickness, standard configurations to unique designs, SKYCO Skylights is ready and able to handle the scope of any size custom structural skylights as well as canopies. Hip ridges, retractables, pyramids, barrel vaults, segmented canopies, polygons, and many more...



CUSTOM FABRICATION



PHOTOVOLTAIC SKYLIGHTS & CANOPIES

WHAT IS PHOTOVOLTAIC GLASS?

Photovoltaic Glass, more specifically, Building Integrated Photovoltaic (BIPV) Glass can be integrated with buildings and used to generate free electricity while allowing natural sunlight for daylighting.

WHY PHOTOVOLTAIC GLASS?

There's a reason why the world's most innovative brands have entrusted SKYCO Skylights with their Photovoltaic needs. With Government Incentives and Rebates, Photovoltaic Skylights and Canopies are more cost-effective than ever.

Federal Rebates amounts to 30% of the entire PV investment, installation included. Combined in some states which offer their own rebates the money saved can add upwards of 75% off your initial investment.

California is committed to achieving 50% Renewable Energies by 2030... many more states to follow.

INTEGRITY
QUALITY
INNOVATION



The state-of-the-art Apple Flagship Store's entire rooftop is equipped with a SKYCO Skylights photovoltaic (BIPV) system to offset power consumption.



GO GREEN

Go Green and receive loads of incentives. Photovoltaic Glass adds cost-effective power savings while enhancing your building's appeal and value. SKYCO Skylights team of engineers and consultants are available for consultation and design assistance on any PV project as well as industrial and custom skylighting.

PV BENEFITS AND DETAILS

- After Rebates: Lower Investment than Traditional Glass
- Raises the Building Value Significantly
- Electricity Generating Skylights and Canopy Structures
- Strong Enough for Walkable PV Floors
- Generate Green Energy While Daylighting Interiors
- Up to 50% Transparency with Photovoltaic Glass
- Durable Material and Easy to Install
- Thin-film and Monocrystalline PV Technology
- New and Innovative Retro-fit Applications
- Full Service Design to Installation Services

Contact us for a free consultation

855.99.SKYCO | SKYCOSKYLIGHTS.com

RETURN ON YOUR PV INVESTMENT

- Lower your reliance on utility companies
- Sell excess energy collected
- Receive Federal Tax Credits of 30%
- Increase your building's value

ELIGIBLE FOR
30%
GOVERNMENT REBATES

CUSTOM SKYLIGHTS

SKYCO Skylights is proud to offer one of the most complete selections of innovative skylight designs in the industry, manufacturing a full range of products from unit skylights for industrial and commercial applications, UL Listed heat and smoke vents, fall-protection screens, security bars, roof access hatches, and custom structural metal-framed skylights. Our systems are available with a complete range of glazing options including high-performance insulated glass, multi-wall polycarbonate, dynamic glass, photovoltaic glass, and our innovative SkyGlaze glazing alternative to FRP Systems.

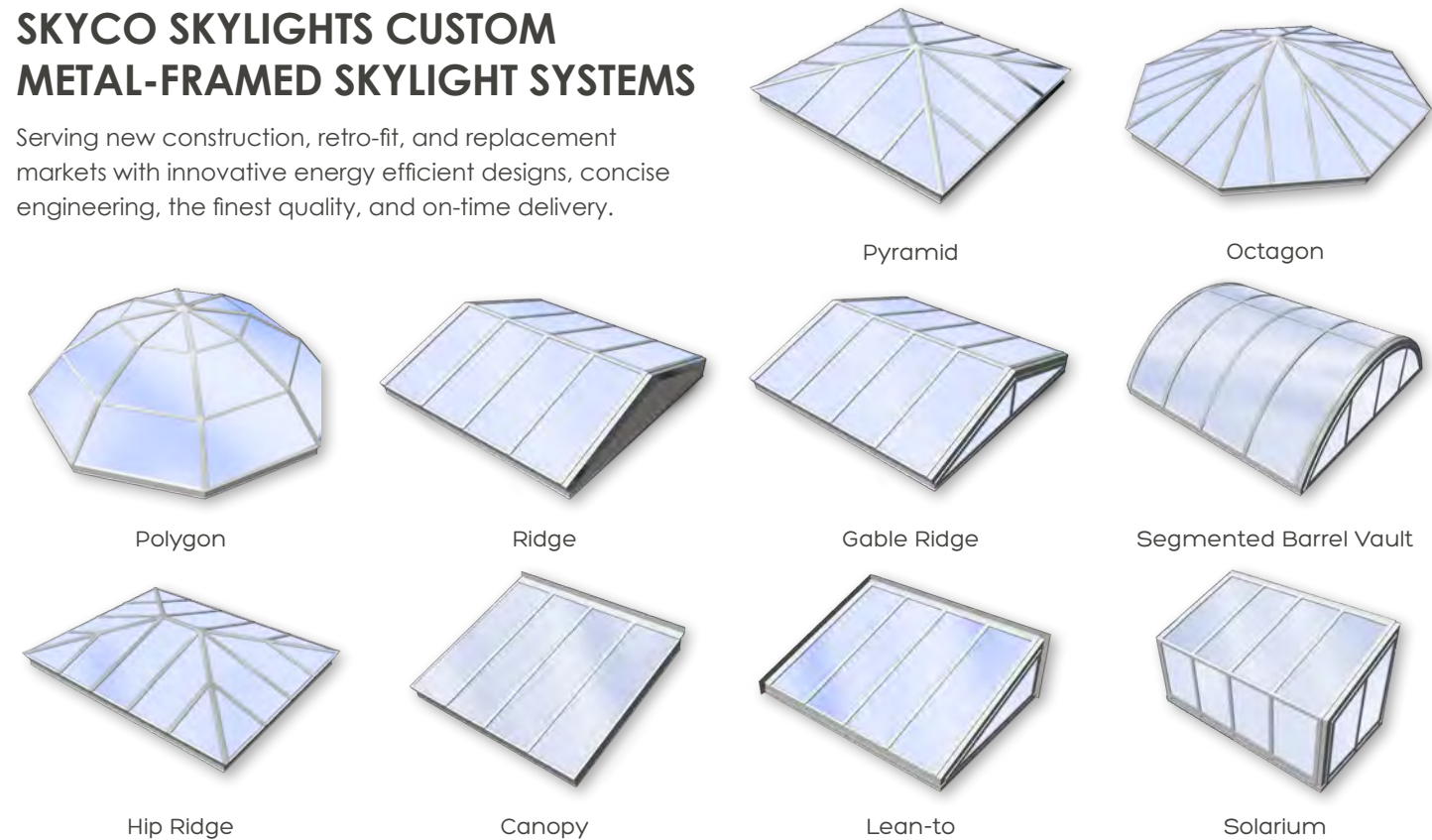
Utilizing the vast knowledge of the SKYCO Skylights team, which features over 150 years of combined practical skylight experience, we are creatively redesigning typical skylight systems to provide superior quality, higher performance, and quick delivery.

SKYCO Skylights understands the demanding energy performance requirements found in the latest Energy Codes and offers a wide range of high-performance products to ensure that the code requirements are met, or in most cases exceeded; all achieved with a superior level of quality.

Your expectations for top quality skylight products are the driving force behind everything we do, and our products clearly demonstrate that commitment to our customers.

SKYCO SKYLIGHTS CUSTOM METAL-FRAMED SKYLIGHT SYSTEMS

Serving new construction, retro-fit, and replacement markets with innovative energy efficient designs, concise engineering, the finest quality, and on-time delivery.

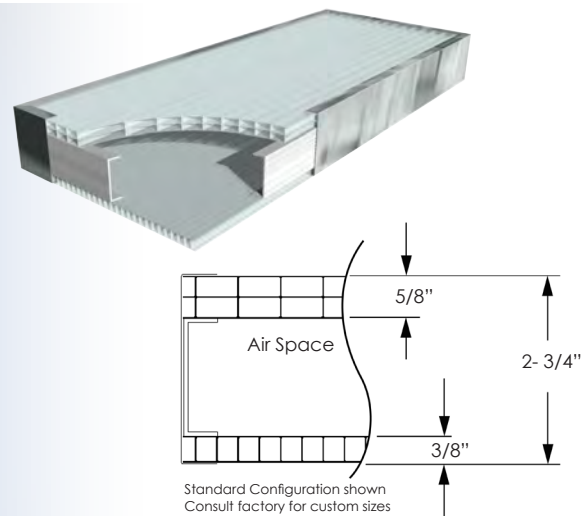


INTRODUCING SKYCO'S SKYGLAZE GLAZING SYSTEM

- Cost-effective alternative to Fiberglass Translucent Glazing (FRP)
- Unlimited performance configurations to meet a wide range of solar heat gain and light transmittance designs
- Provides an impact strength 200 times that of glass
- Skyglaze will not crack, turn yellow, fiberbloom or generate mold
- Glazing panels maintain a Class A fire rating (interior and exterior)
- Periodic protective coating not required to maintain warranty
- SKYCO Skylights's engineering team is available to assist with cost-effective and highest performing designs.

GLAZING OPTIONS FOR CUSTOM SKYLIGHTS

- Insulated Glass**
High-performance Low E
- Dynamic Glass**
Electronically tintable
- Photovoltaic Glass**
for BIPV skylight systems
- Photovoltaic Panels**
for canopies and carports
- Acrylic Sheet**
Flat or curved for vaults
- Polycarbonate Sheet**
Flat or curved for vaults
Multi-wall polycarbonate structural sheet Standing-seam polycarbonate canopy systems



INDUSTRIAL SKYLIGHTS AND SMOKE VENTS

UNIQUE DESIGNS & GLAZING SYSTEMS TO MAXIMIZE DAYLIGHT HARVESTING

SKYPRO ILLUMINATOR UNIT SKYLIGHTS

Superior quality natural daylighting combined with exceptional strength and durability

- High-impact SKYPRO polycarbonate domes
- Unique SKYWAVE Arc design provides even light distribution and 30% more surface area
- Rated for high-wind exposure zones
- Meets UL 972 Impact Resistance Standard
- IR resistance options to reduce SHGC
- Single or double dome options
- Curb mounted or self-flashing available



Curb mounted unit shown

SKYPRO VORTEX LOUVERED SKYLIGHT

A cost-effective and energy-efficient unit skylight designed to provide a high-quality, even light distribution combined with gravity ventilation

- High-impact SKYPRO polycarbonate domes
- Engineered with louvers built into base
- Standard rain shields incorporated inside base
- Unique SKYWAVE Arc design provides even light distribution and 30% more surface area
- Rated for high-wind exposure zones
- Curb mounted or self-flashing available

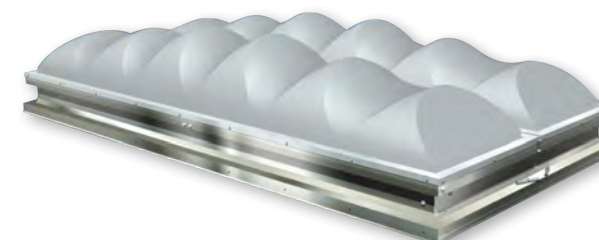


Curb mounted unit shown

UL LISTED HEAT AND SMOKE VENT

Meets the requirements of the International Fire Code (IFC) and Building Code (IBC)

- Available as curb mounted or self-flashing
- Tested and certified to UL 793 Standard
- High-impact SKYPRO polycarbonate domes
- Galvanized steel or aluminum frames
- Domed or metal insulated lid option
- Quick lead-times to meet project schedules
- Listed for 90 psf uplift load
- Passes performance requirements for AAMA/WDMA/CSA 101/I.S./A440-11



UL LISTED HEAT AND SMOKE VENT WITH LOUVERED BASE

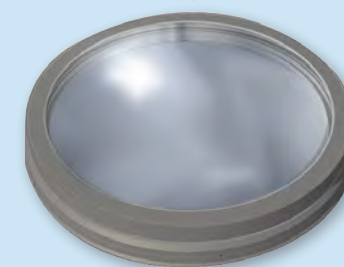
Meets the requirements of the International Fire Code (IFC) and Building Code (IBC)

- Available as curb mounted or self-flashing
- Tested and certified to UL 793 Standard
- High-impact SKYPRO polycarbonate domes
- Galvanized steel or aluminum frames
- Domed or Metal Insulated Lid option
- Listed for 90 psf uplift load
- Passes performance requirements for AAMA/WDMA/CSA 101/I.S./A440-11



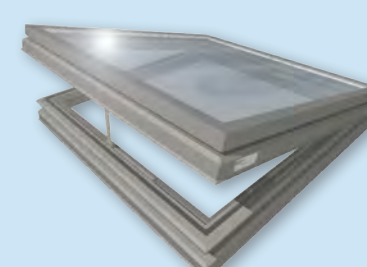
CIRCULAR GLASS SKYLIGHTS

Curb Mount or Self-Flashing Insulated or single laminate glass options



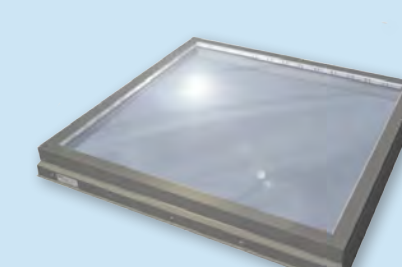
UNIT SKYLIGHTS

Fixed or Operable Curb Mount or Self-Flashing Domes and Pyramids



THERMALLY-BROKEN SKYLIGHTS

Curb Mount or Self-Flashing Dome or Glass Glazing features the SKYCO Skylights AAMA approved thermal barrier



ROOF ACCESS HATCHES

Galvanized steel with standard federal safety red powder coat finish

MODEL	SIZE	MODEL	SIZE
2424-S-RH-SF	24" x 24"	3054-S-RH-SF	30" x 54"
2430-S-RH-SF	24" x 30"	3096-S-RH-SF	30" x 96"
2436-S-RH-SF	24" x 36"	3636-S-RH-SF	36" x 36"
3030-S-RH-SF	30" x 30"	3648-S-RH-SF	36" x 48"
3036-S-RH-SF	30" x 36"	4848-S-RH-SF	48" x 48"



Roof Hatch Assist



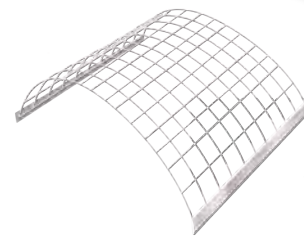
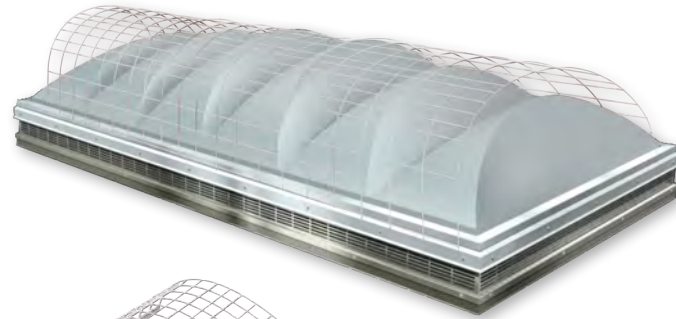
Hatch Railing System

SAFETY & SECURITY PRODUCTS

SKYLIGHT FALL-GUARD SAFETY SCREENS MODEL FGS

Engineered to meet OSHA and CAL-OSHA standards

- Standard & custom sizes
- Mounting designs to fit all types of skylights

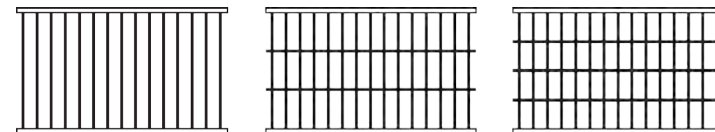


Standard safety screen shown
Custom sizes available

SECURITY BARS MODEL SB

Painted with a standard white powder coat finish

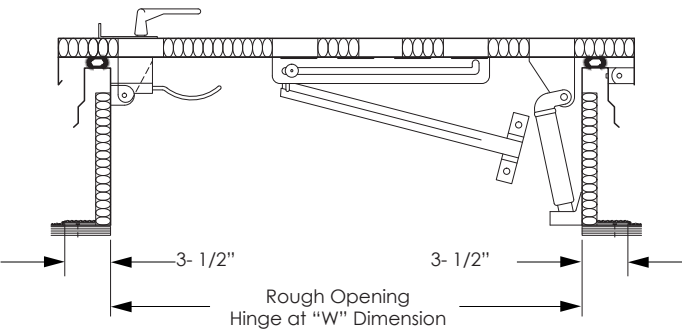
- Standard & custom sizes available
- For curb mount and self-flashing installations



SB-1

SB-2

SB-3



GLAZING PERFORMANCE FOR UNIT SKYLIGHTS

COLOR	CODE	SINGLE DOME			DOUBLE DOME			TRIPLE DOME		
		U-Fact	SHGC	VLT	U-Fact	SHGC	VLT	U-Fact	SHGC	VLT
Skypro White	SPW	0.80	0.58	70%	0.50	0.50	60%	0.30	0.45	45%
Skypro Clear	SPC	0.80	0.94	96%	0.50	0.90	94%	0.30	0.86	90%
Skypro White Prismatic	PW	0.80	0.55	84%	0.50	0.50	70%	0.30	0.48	56%
Skypro Clear Prismatic	PC	0.80	0.94	96%	0.50	0.90	94%	0.30	0.86	90%
Skypro - IR	SPIR	0.80	0.33	47%	0.50	0.33	45%	0.30	0.33	42%
Skypro - IR - HP	SPHP	N/A	N/A	N/A	0.45	0.26	38%	0.30	0.21	33%
Medium White Acrylic	AW	0.80	0.55	53%	0.50	0.50	49%	0.30	0.48	45%
Clear Acrylic	AC	0.80	0.87	95%	0.50	0.72	92%	0.30	0.65	85%
Bronze Acrylic	AB	0.80	0.45	27%	0.50	0.39	25%	0.30	0.30	23%



WARNING: Skylights manufactured by SKYCO Skylights are designed to meet code requirements. They are not intended to withstand human impact or falling objects and should not be walked on.

Disclaimer: To facilitate SKYCO Skylight's continued commitment to improve our products, designs and specifications are subject to change without notice.



For more information: www.SKYCOSKYLIGHTS.com | 855.99.SKYCO

“We love the new 40 ft. dome skylight from SKYCO Skylights. The whole process was simple and on-time. Their attention to detail really shines. We will definitely recommend SKYCO Skylights for all our daylighting needs.”

—The Shoppes at Carlsbad



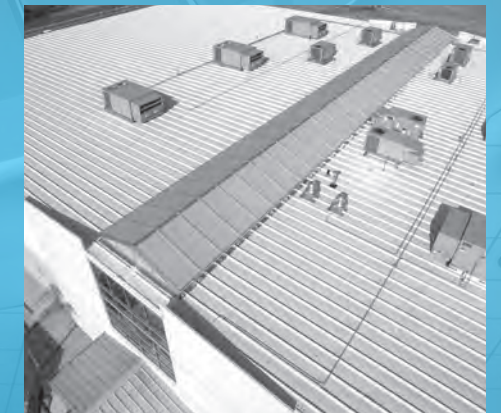
GOOGLE REGIONAL OFFICE

“The skylight by SKYCO Skylights adds natural light to our office which is proven to increase productivity.”



LOGISTICS CENTER

“We save significantly on energy cost because the warehouse is completely lit in daytime by the 300+ SKYPRO skylights.”



PEARCE SPORTS CENTER

“The majority of our interior lighting is provided by the giant gable ridge skylight by SKYCO Skylights. Their quality really shines in the detail.”